

**Contact**

Post:

REPUBLIC OF SINGAPORE  
AERONAUTICAL  
INFORMATION SERVICES  
CIVIL AVIATION AUTHORITY  
OF SINGAPORE  
SINGAPORE CHANGI  
AIRPORT  
P.O. BOX 1, SINGAPORE  
918141

Tel: (65) 6422 7036

AFS: WSSSYNYX

Fax: (65) 64410221

Email: [caas\\_singaporeais@caas.gov.sg](mailto:caas_singaporeais@caas.gov.sg)URL: [www.caas.gov.sg](http://www.caas.gov.sg)URL: <https://aim-sg.caas.gov.sg>**AIP Supplement for  
Singapore****AIRAC AIP SUP  
175/2024****Effective from 28 NOV 2024****PERM****Published on 17 OCT 2024****SINGAPORE CHANGI AIRPORT – RE-DESIGNATION OF TAXIWAY P1 AS  
TAXIWAY P8****1 INTRODUCTION**

1.1 Singapore Changi Airport will be carrying out works to redesignate Taxiway P1 as Taxiway P8 to optimize efficiency and improve aircraft operations.

**2 RE-DESIGNATION OF TAXIWAY P1 AS TAXIWAY P8**

2.1 Taxiway P1 will be redesignated as Taxiway P8 effective from 28 November 2024, 1845UTC.

**3 NEW TAXIWAY DESIGNATION**

3.1 The new taxiway designation for the affected taxiway will be Taxiway P8. Taxiway P1 will cease to exist after the redesignation. The location of the affected taxiway is shown in **Chart 1** and the new Taxiway P8 designation is also shown in **Chart 2**.

**4 CLOSURES OF AFFECTED TAXIWAYS AND TAXILANES**

4.1 The affected taxiways and taxilanes including the surrounding aircraft maneuvering areas will be closed. Details of the closure areas and corresponding closure timings are tabulated below and shown in **Chart 3**.

Closure area	Closure of affected taxiways and taxilanes	Closure period
Area 1	TWY P1 between TWY N and TWY K, including Junction of TWY P1, TWY K and TXL N5	28 November 2024, 1700UTC to 1900UTC
	TWY K between TWY P1 and TWY C	
	TXL N5 between TWY K and before Aircraft Stand 611	
Area 2	TWY N between TWY P1 and TXL N4, including Junction of TWY N and TWY P1	28 November 2024, 1730UTC to 1900UTC
	TWY P between TWY T and TXL N4, including Junction of TWY P and TWY P7, Junction of TWY P and TWY P1 and Junction of TWY P and TWY T	
	TWY P7 between TWY P and TWY Q	
	TWY P1 between TWY P and TWY P2, including Junction of TWY P1 and TWY Q	
	TWY T between TWY P and TWY P2, including Junction of TWY T and TWY Q and Junction of TWY T and TWY T1	
Area 3	TWY T between TWY Q and TXL R1, including Junction of TWY T and TWY T2, Junction of TWY T and TWY T3 and Junction of TWY T and TWY T4	28 November 2024, 1830UTC to 2000UTC
	TWY Q between TWY P1 and TXL Q3, including Junction of TWY Q and TWY P7 and Junction of TWY Q and TWY P1	
	TWY P7 between TWY P and TWY Q	
	TWY P2 between TWY T and TXL P7, including Junction of TWY P2 and TXL P7, Junction of TWY P2 and TWY P1 and Junction of TWY P2 and TWY T	
	TWY P3, including Junction of TWY P3 and TWY T and Junction of TWY P3 and TWY P1	
	TWY P4, including Junction of TWY P4 and TWY T and Junction of TWY P4 and TWY P1	
	TWY P5, including Junction of TWY P5 and TWY T and Junction of TWY P5 and TWY P1	
	TXL P4, including Junction of TXL P4 and TXL P7 and Junction of TXL P4 and TWY P1	
	TXL P5, including Junction of TXL P5 and TXL P6, Junction of TXL P5 and TXL P7 and Junction of TXL P5 and TWY P1	
	TXL P6, including Junction of TXL P6 and TXL P7	
	TXL P7	
TWY P1 between TXL P5 and TWY Q		

4.2 Delays to aircraft movements may occur during the works and immediately after the new Taxiway P8 designation is effective. Follow-me vehicles may be deployed during the period of works to facilitate unforeseen towing requests, if operationally necessary.

## 5 CANCELLATION

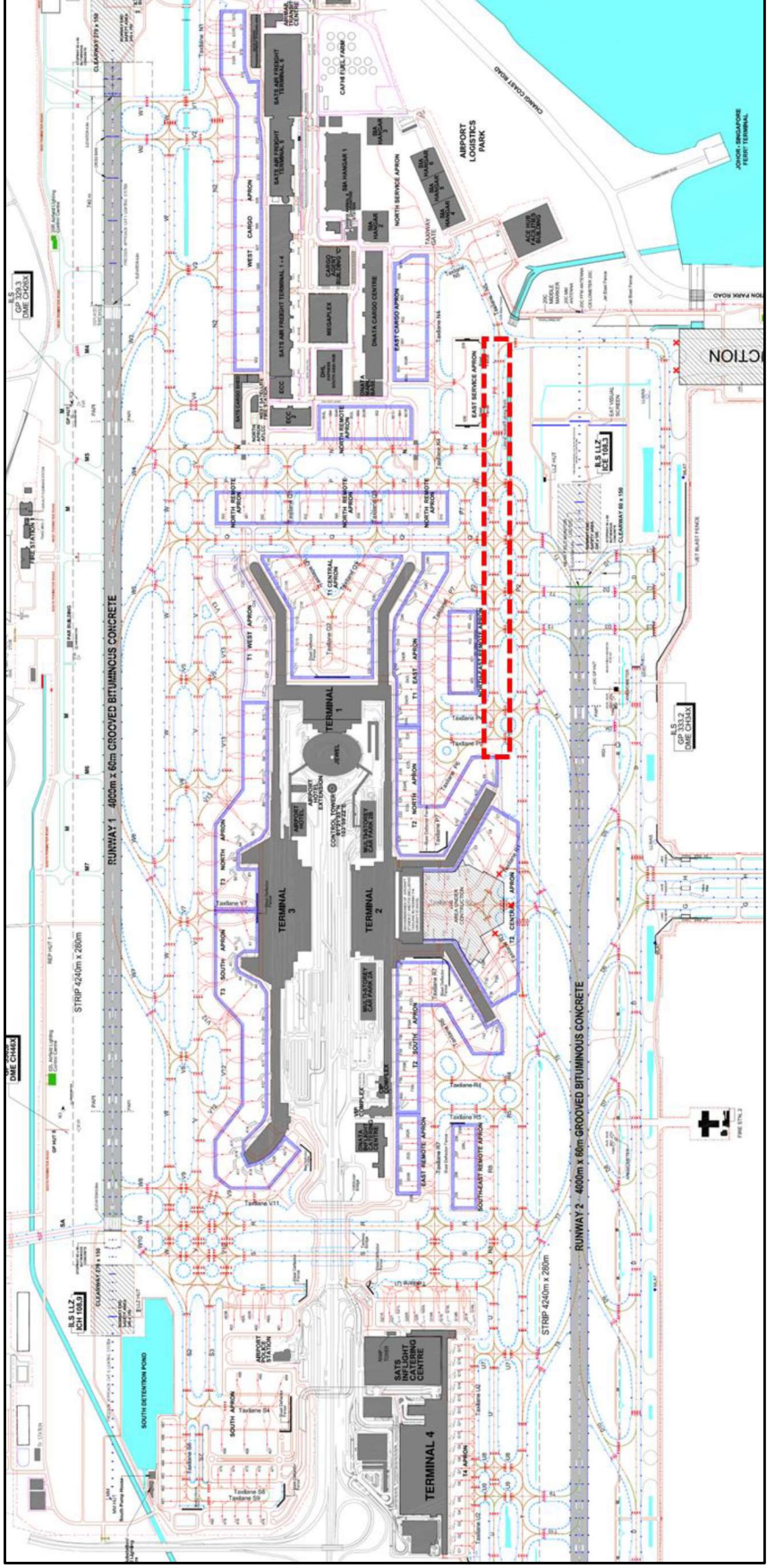
5.1 Any change to the contents of this AIP Supplement will be notified through NOTAM.

5.2 This AIP Supplement will remain current until the information is incorporated into AIP Singapore.

Location of affected Taxiway ..... [Chart 1](#)  
 New Taxiway P8 Designation ..... [Chart 2](#)  
 Closure of Taxiways and Taxilanes including the surrounding aircraft maneuvering within Areas 1, 2 and 3 ..... [Chart 3](#)

# CHART 1

## LOCATION OF AFFECTED TAXIWAY



*PAGE INTENTIONALLY LEFT BLANK*

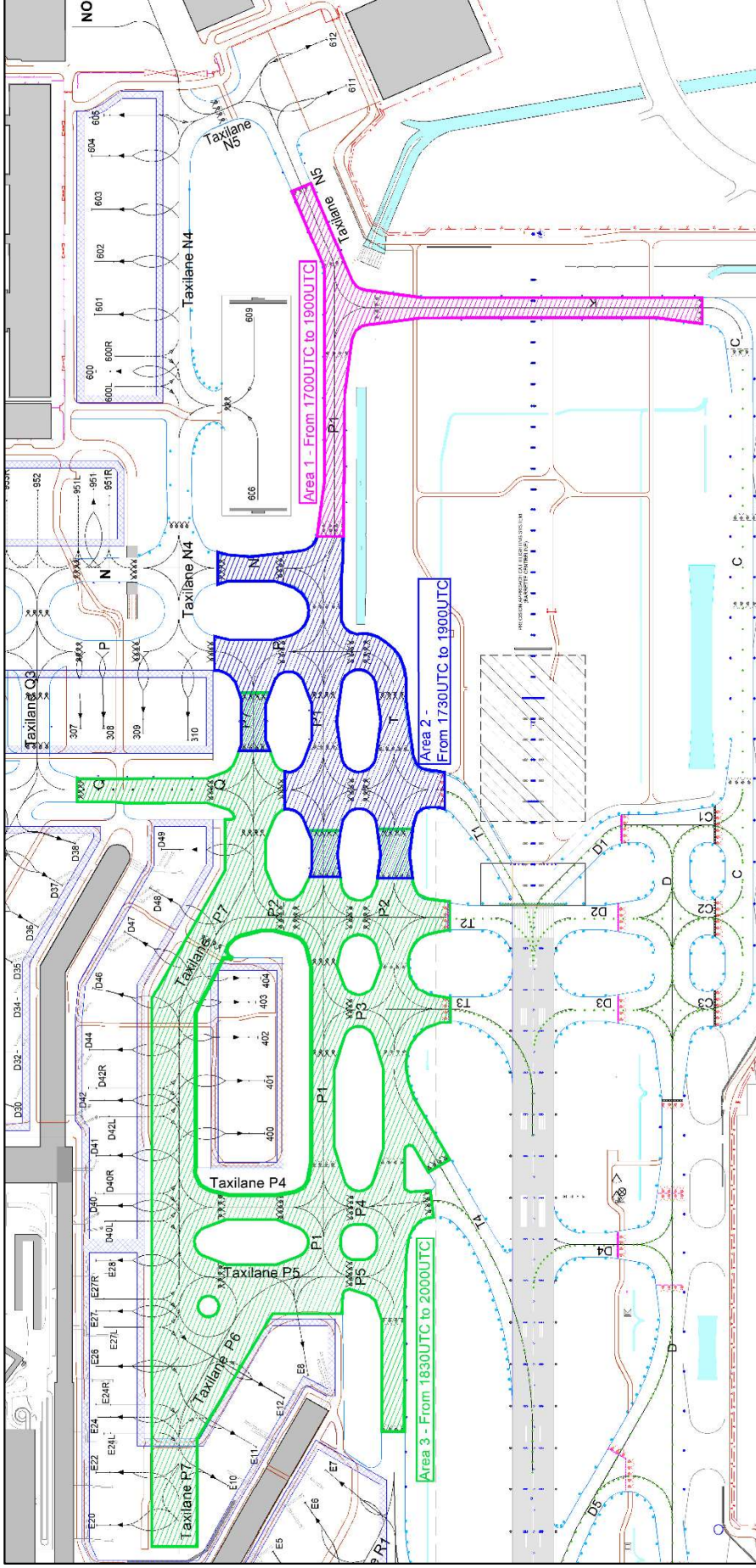




*PAGE INTENTIONALLY LEFT BLANK*

# CHART 3

## CLOSURE OF TAXIWAYS AND TAXILANES INCLUDING THE SURROUNDING AIRCRAFT MANEUVERING WITHIN AREAS 1, 2 AND 3



*PAGE INTENTIONALLY LEFT BLANK*