

Contact

Post:

REPUBLIC OF SINGAPORE
AERONAUTICAL
INFORMATION SERVICES
CIVIL AVIATION AUTHORITY
OF SINGAPORE
SINGAPORE CHANGI
AIRPORT
P.O. BOX 1, SINGAPORE
918141

Tel: (65) 6422 7036

AFS: WSSSYNYX

Fax: (65) 64410221

Email: caas_singaporeais@caas.gov.sgURL: www.caas.gov.sgURL: <https://aim-sg.caas.gov.sg>

AIP Supplement for Singapore

**AIP SUP****083/2024****Effective from 09 MAY 2024****/ 03 JAN 2028****Published on 09 MAY 2024**

SINGAPORE CHANGI AIRPORT – DECOMMISSIONING OF AIRCRAFT STANDS E1 AND F30 AND TEMPORARY CLOSURE OF TAXILANES R1, R2, R3 AND AIRCRAFT STANDS E2, E3, E4, F31, F32, F33 AND F34 DUE TO CONSTRUCTION WORK ACTIVITIES AT TERMINAL 2

1 INTRODUCTION

1.1 This AIP Supplement informs aircraft operators and pilots of the permanent decommissioning of aircraft stands E1 and F30, and Taxilane R2 behind these aircraft stands; and the temporary closure of Taxilanes R1, R2, R3 and aircraft stands E2, E3, E4, F31, F32, F33 and F34 to facilitate construction work activities at Terminal 2 in Singapore Changi Airport from **09 May 2024, 0400UTC to 03 January 2028, 2359UTC**.

1.2 Please refer to **Annex A** for the location of the construction work zone. The work zone will be demarcated by unserviceability markers, supplemented by visual aids and physical barricades.

2 CLOSURE OF TAXILANES AND AIRCRAFT STANDS

2.1 Detailed closure of the taxilanes and aircraft stands affected by the works are tabulated below.

Table A		
Taxilanes / Aircraft stands	Closure period	Chart
Aircraft stands E1 and F30 and TXL R2 behind aircraft stands	Permanently Decommissioned Effective From 09 May 2024, 0400UTC	Annex A
Aircraft stands E2, E3, E4, F31, F32, F33 and F34	Temporarily Closed From	
TXL R1 behind aircraft stand E5, TXL R2 behind aircraft stands E2, E3, E4, F31, F32 and F33 TXL R3 behind aircraft stands F34	09 May 2024, 0400UTC To 03 January 2028, 2359UTC	

3 TEMPORARY CHANGES TO GROUND MARKINGS AND LIGHTING

3.1 All markings leading into the closed taxilanes, aircraft stands, and work area will be removed.

3.2 All airfield lighting leading into the unserviceable areas of Taxilanes R1, R2, R3 and closed aircraft stands will be switched off.

3.3 Unserviceability markers will be in place to demarcate Taxilane R2 as closed.

3.4 The lead-in and pushback markings for active aircraft stands, adjacent to the work area, will be revised. The affected aircraft stands are E6 and F35/L/R.

3.5 Due to temporary changes in visual aids and aircraft pushback procedures at the affected taxilanes and aircraft stands, pilots are to pay extra attention to visual aids and ATC instructions when taxiing in the vicinity of the closed work areas.

3.6 Please refer to **Annex B** for the details of the temporary changes to ground markings.

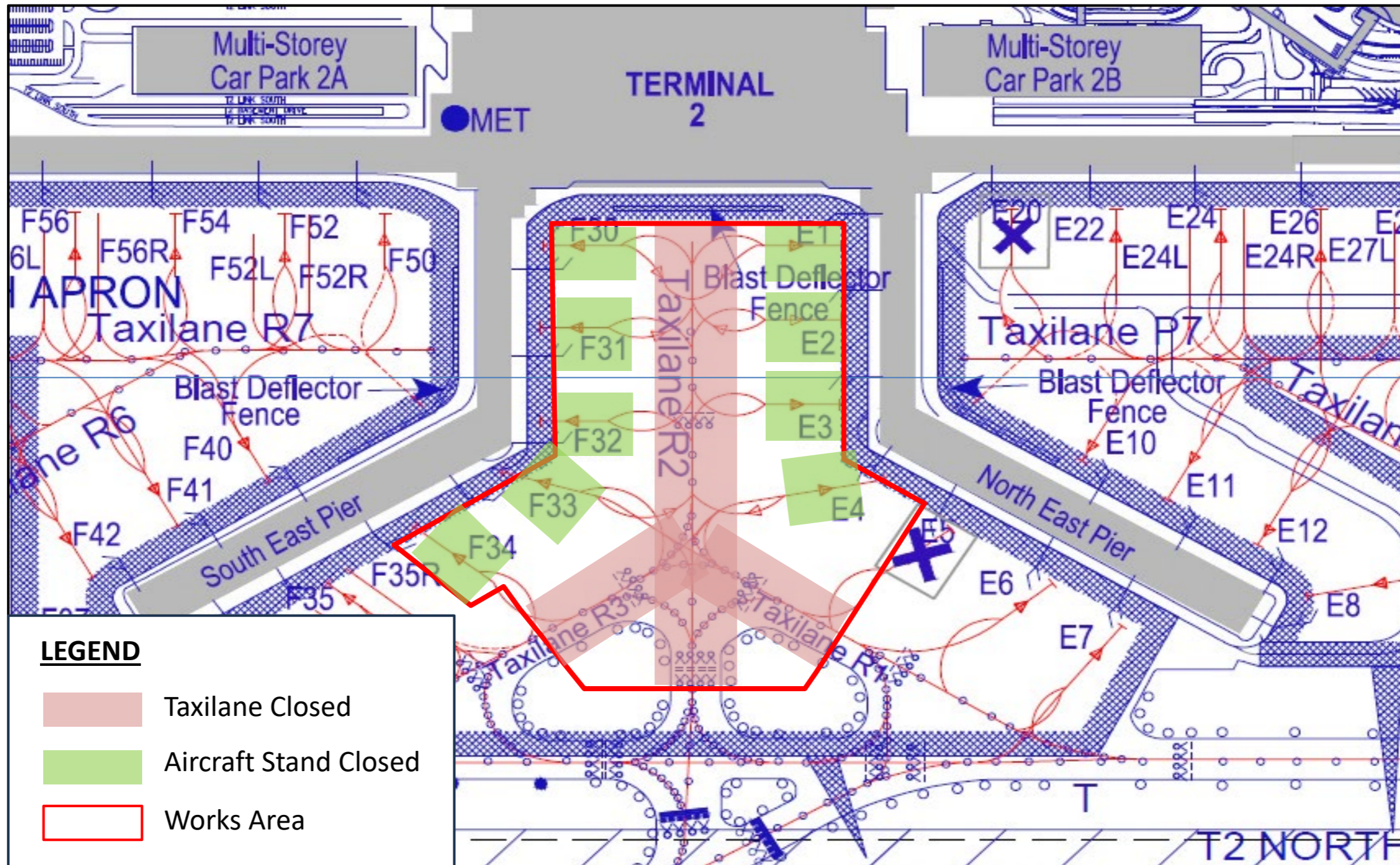
4 CHANGES

4.1 This AIP Supplement supersedes AIP Supplement 165/2023 dated 07 December 2023.

4.2 Any change to the contents of this AIP Supplement will be notified through NOTAM.

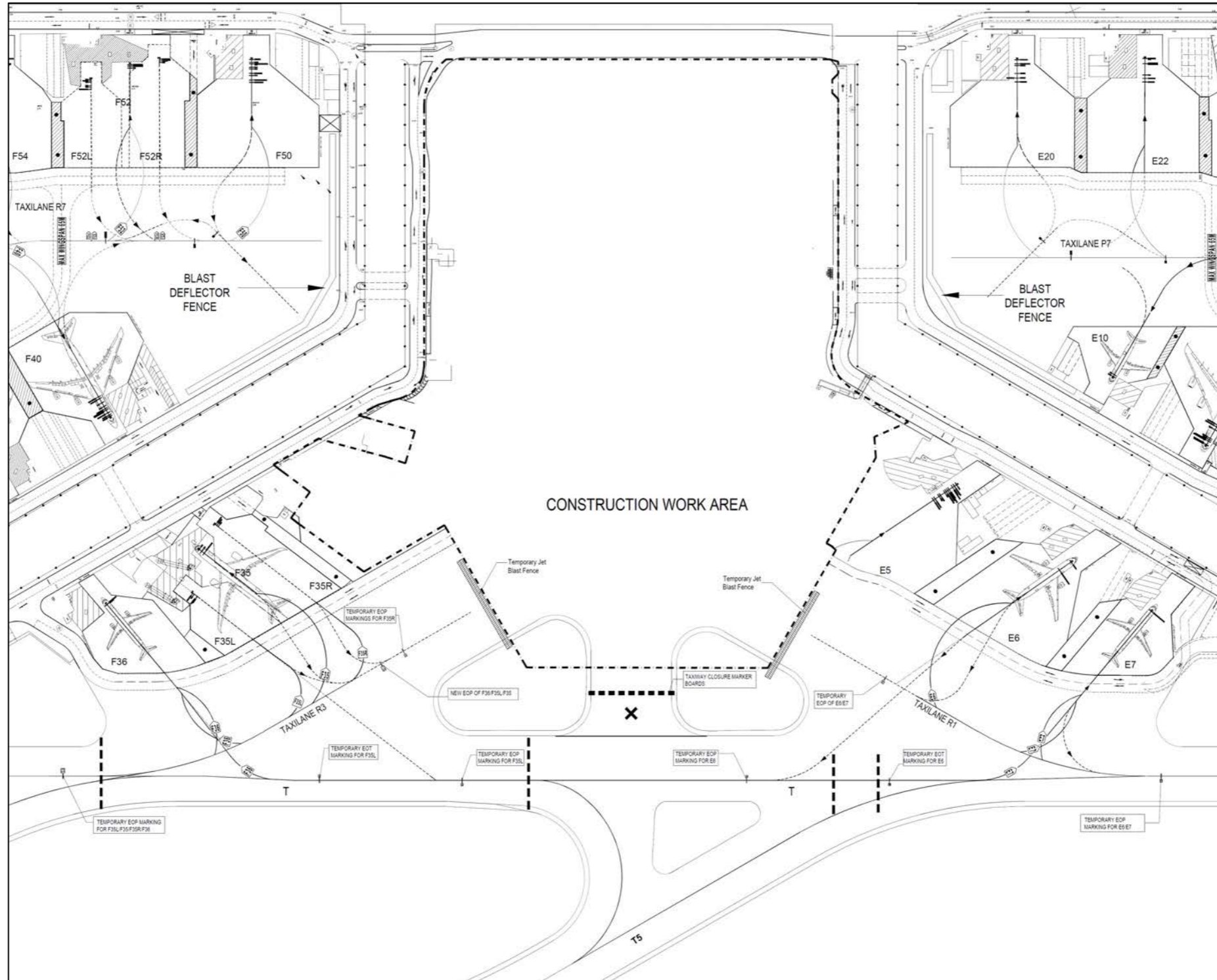
Enlarged location plan for the closure of aircraft stands and taxilanes detailed in Table A [Annex A](#)
Revision to ground markings [Annex B](#)

ENLARGED LOCATION PLAN FOR CLOSURE OF AIRCRAFT STANDS E2, E3, E4, F31, F32, F33, F34, AND TXL R1 (BEHIND AIRCRAFT STAND E5), TXL R2, TXL R3 (BEHIND AIRCRAFT STAND F34), WITH EFFECT FROM 09 MAY 2024, 0400UTC TO 03 JANUARY 2028, 2359UTC; B) PERMANENT DECOMMISSIONING OF TXL R2 (BEHIND AIRCRAFT STANDS E1 AND F30) INCLUDING AIRCRAFT STANDS E1 AND F30, WITH EFFECT FROM 09 MAY 2024, 0400UTC TO PERM SINGAPORE CHANGI AIRPORT TERMINAL 2



PAGE INTENTIONALLY LEFT BLANK

**REVISION TO GROUND MARKINGS ON TXL R1 AND TXL R3 BEHIND AIRCRAFT STANDS, JUNCTION OF TXL R3/TWY T,
JUNCTION OF TXL R2/TWY T/TWY T5 AND JUNCTION OF TXL R1/TWY T
SINGAPORE CHANGI AIRPORT TERMINAL 2
WITH EFFECT FROM 09 MAY 2024, 0400UTC TO 03 JANUARY 2028, 2359UTC**



PAGE INTENTIONALLY LEFT BLANK